

NOTE: ALL DISTANCES SHOWN TO RIGHTS-OF-WAY, FENCES, UTILITIES AND OTHER EXISTING OBJECTS ARE FROM CENTERLINE OF SURVEY.

CONTRACTOR TO VERIFY FLOWLINES OF ALL CROSS DRAIN STRUCTURES TO BE EXTENDED.

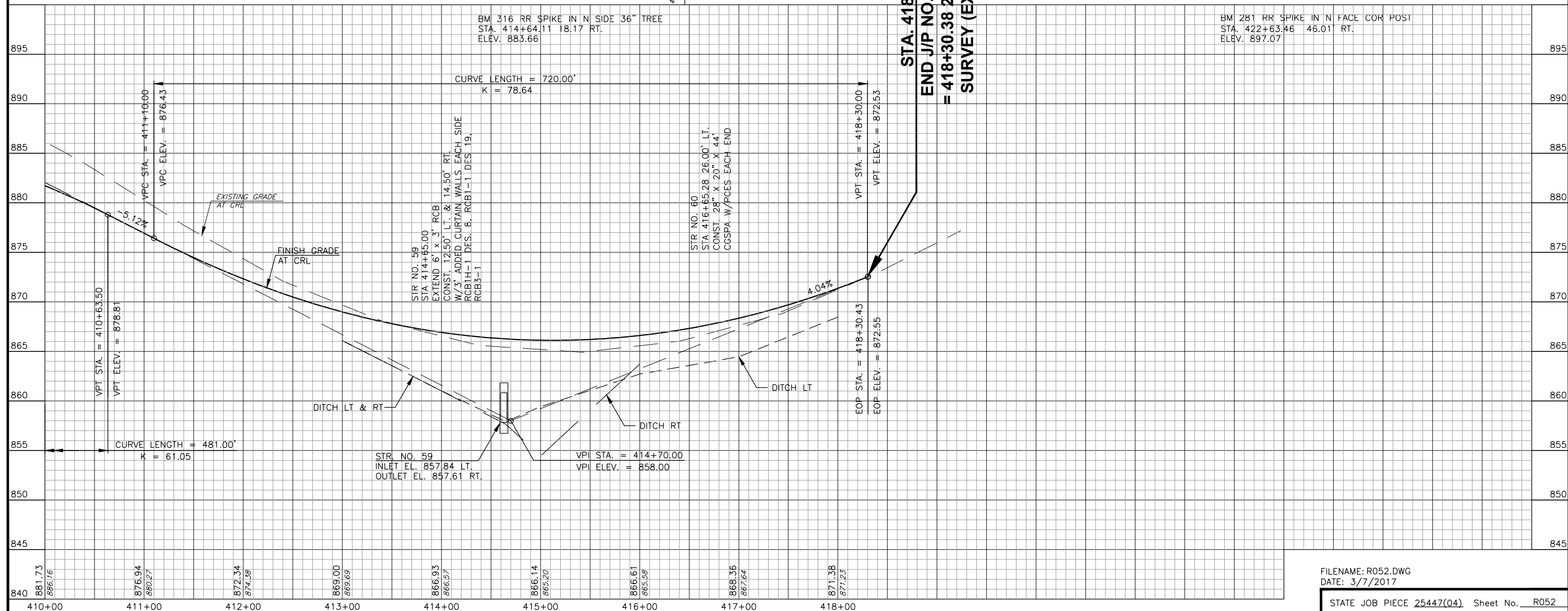
CONTRACTOR TO MEET AND MATCH EXISTING GRADES AT STATION 418+30.43

SW/4 SEC. 16, T-6-S, R-1-W

NE/4 SEC. 21, T-6-S, R-1-W

SCALES:
1" = 50' HOR
1" = 5' VER

STA. 418+30.43
END J/P NO. 25447(04)
= 418+30.38 2.30' RT. CL.
SURVEY (EXTENDED)



BM 316 RR SPIKE IN N SIDE 36" TREE
STA. 414+64.11 18.17 RT.
ELEV. 883.66

BM 281 RR SPIKE IN N FACE COR POST
STA. 422+63.46 46.01 RT.
ELEV. 897.07

STR. NO. 59
INLET EL. 857.84 LT.
OUTLET EL. 857.61 RT.

VPI STA. = 414+70.00
VPI ELEV. = 858.00

EOP STA. = 418+30.43
EOP ELEV. = 872.55

VPT STA. = 418+30+00
VPT ELEV. = 872.53

STR. NO. 60
STA. 416+65.28 26.00' LT.
CONST. 28" X 20" X 44"
CGSPA W/PCES EACH END

STR. NO. 59
STA. 414+65.00
EXTEND 6' X 3' RCB
CONST. 12.50' LT. & 14.50' RT.
W/3' ADDED CURTAIN WALLS EACH SIDE
RCB1H-1 DES. 8, RCB1-1 DES. 19,
RCB3-1